
Software Reuse

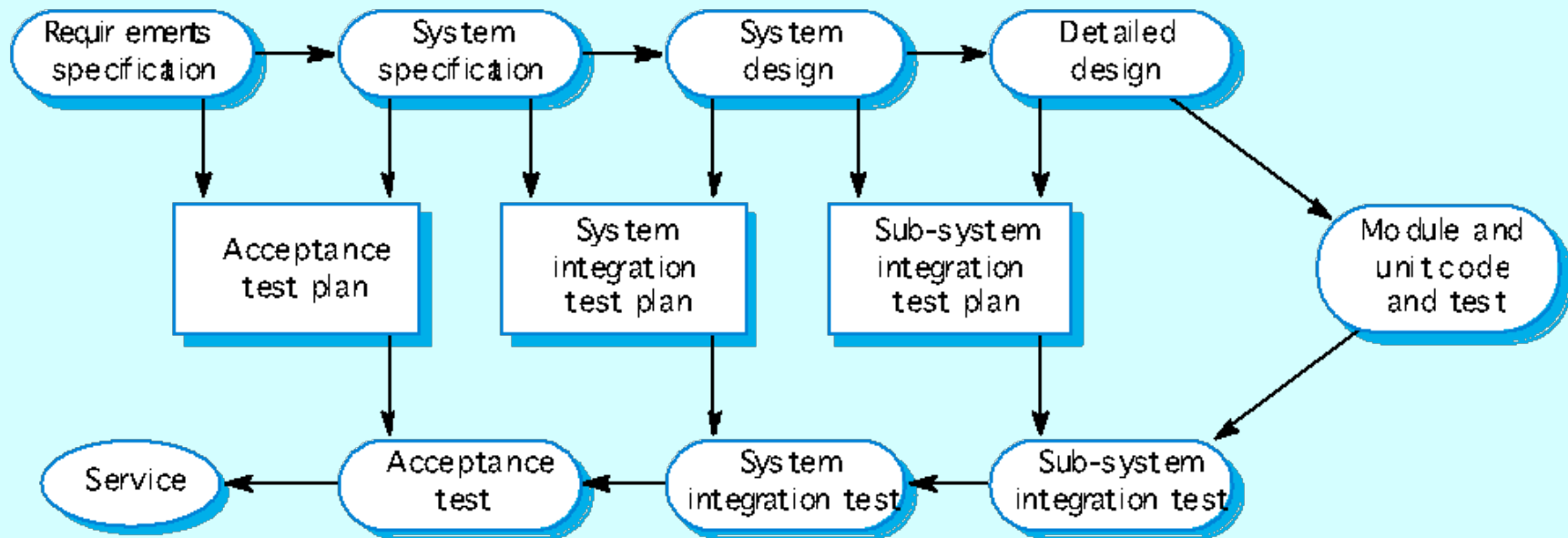
Objectives

- To explain the benefits of software reuse and some reuse problems
- To discuss several different ways to implement software reuse
- To explain how reusable concepts can be represented as patterns or embedded in program generators
- To discuss COTS reuse
- To describe the development of software product lines

Topics covered

- The reuse landscape
- Design patterns
- Generator based reuse
- Application frameworks
- Application system reuse

Conventional software engineering



The changing face of SE

- Software reuse is a major success story in software engineering.
- For business systems, the predominant approach for application system development is based around large-scale software reuse.
- Finer-grain reuse is widely used in all types of system development.
- Inevitably, reuse-based approaches will become the norm for all types of system.

Software reuse

- Software reuse is implemented in a number of different ways
 - Component-based Software Engineering (CBSE)
 - Service-oriented systems
 - System families
 - ERP systems (SAP, Oracle, etc.)
 - COTS-based (vertical) software development

Diskusi Kelompok

- Cari studi kasus (hasil penelitian, success-story dll) yang berkaitan dengan penerapan “reuse software”
- Identifikasi dan Analisis Penerapan “reuse software”.
- Format :
 - Pendahuluan
 - Pembahasan
 - Penutup

Why reuse?

- In principle:
 - Faster time to deployment
 - Lower management risk
 - Lower costs
 - Higher dependability
 - More management control of the procurement process
- In practice:
 - The promised benefits may not always be as great as expected. Problems of adapting operational processes can be very hard to solve.

Software reuse

- In most engineering disciplines, systems are designed by composing existing components that have been used in other systems.
- Software engineering has been more focused on original development but it is now recognised that to achieve better software, more quickly and at lower cost, we need to adopt a design process that is based on *systematic software reuse*.

Reuse processes

- The key difference between reuse processes and conventional software engineering processes is that for reuse, the customer's requirements are modified to take advantage of what is available for reuse.
- While the customer may not get exactly what they want, the software should be available more cheaply and more quickly

Reuse-based software engineering

- Application system reuse
 - The whole of an application system may be reused either by incorporating it without change into other systems (COTS reuse) or by developing application families.
- Component reuse
 - Components of an application from sub-systems to single objects may be reused.
- Object and function reuse
 - Software components that implement a single well-defined object or function may be reused.

Reuse benefits 1

Increased dependability	Reused software, that has been tried and tested in working systems, should be more dependable than new software. The initial use of the software reveals any design and implementation faults. These are then fixed, thus reducing the number of failures when the software is reused.
Reduced process risk	If software exists, there is less uncertainty in the costs of reusing that software than in the costs of development. This is an important factor for project management as it reduces the margin of error in project cost estimation. This is particularly true when relatively large software components such as sub-systems are reused.
Effective use of specialists	Instead of application specialists doing the same work on different projects, these specialists can develop reusable software that encapsulate their knowledge.

Reuse benefits 2

Standards compliance	Some standards, such as user interface standards, can be implemented as a set of standard reusable components. For example, if menus in a user interfaces are implemented using reusable components, all applications present the same menu formats to users. The use of standard user interfaces improves dependability as users are less likely to make mistakes when presented with a familiar interface.
Accelerated development	Bringing a system to market as early as possible is often more important than overall development costs. Reusing software can speed up system production because both development and validation time should be reduced.

Reuse problems 1

Increased maintenance costs	If the source code of a reused software system or component is not available then maintenance costs may be increased as the reused elements of the system may become increasingly incompatible with system changes.
Lack of tool support	CASE toolsets may not support development with reuse. It may be difficult or impossible to integrate these tools with a component library system. The software process assumed by these tools may not take reuse into account.
Not-invented-here syndrome	Some software engineers sometimes prefer to re-write components as they believe that they can improve on the reusable component. This is partly to do with trust and partly to do with the fact that writing original software is seen as more challenging than reusing other people's software.

Reuse problems 2

Creating and maintaining a component library

Populating a reusable component library and ensuring the software developers can use this library can be expensive. Our current techniques for classifying, cataloguing and retrieving software components are immature.

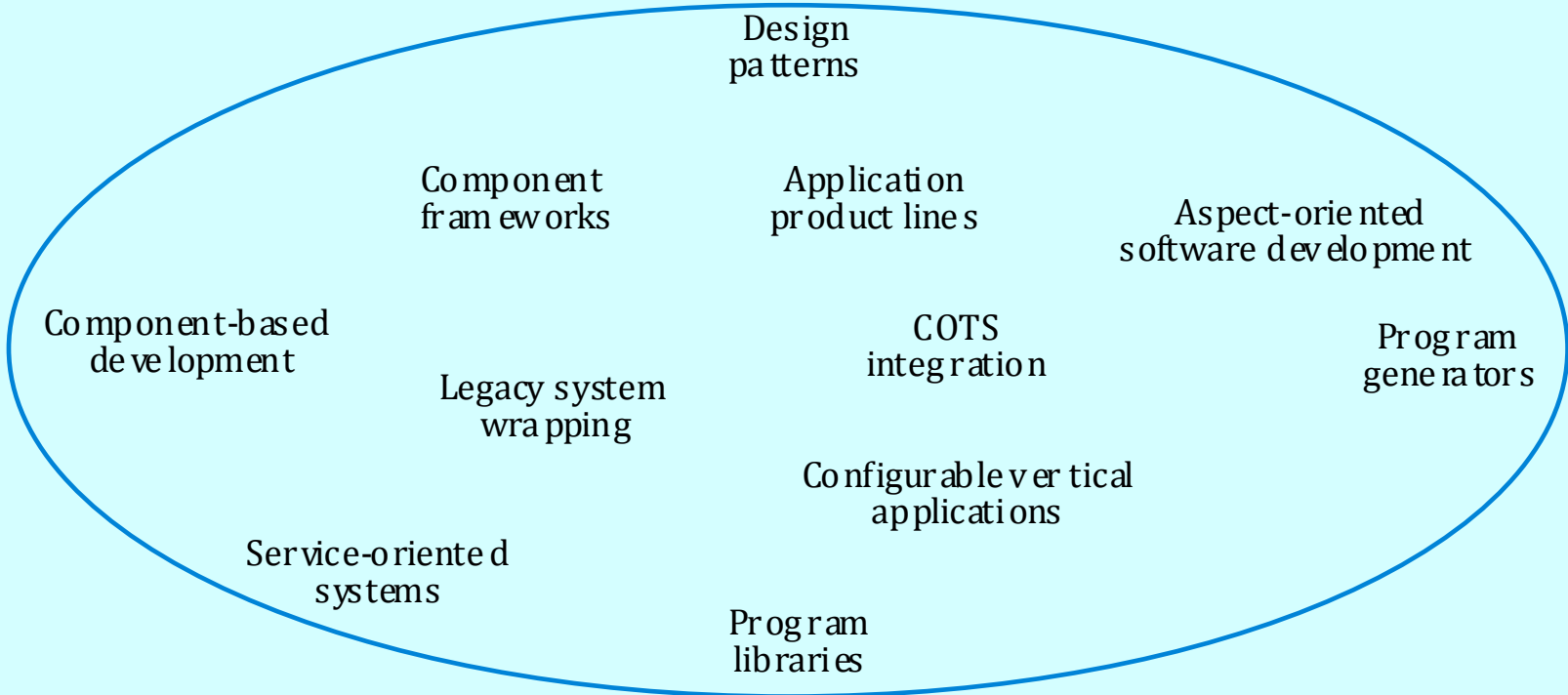
Finding, understanding and adapting reusable components

Software components have to be discovered in a library, understood and, sometimes, adapted to work in a new environment. Engineers must be reasonably confident of finding a component in the library before they will make routinely include a component search as part of their normal development process.

The reuse landscape

- Although reuse is often simply thought of as the reuse of system components, there are many different approaches to reuse that may be used.
- Reuse is possible at a range of levels from simple functions to complete application systems.
- The reuse landscape covers the range of possible reuse techniques.

The reuse landscape



Reuse approaches 1

Design patterns	Generic abstractions that occur across applications are represented as design patterns that show abstract and concrete objects and interactions.
Component-based development	Systems are developed by integrating components (collections of objects) that conform to component-model standards.
Application frameworks	Collections of abstract and concrete classes that can be adapted and extended to create application systems.
Legacy system wrapping	Legacy systems that can be ‘wrapped’ by defining a set of interfaces and providing access to these legacy systems through these interfaces.
Service-oriented systems	Systems are developed by linking shared services that may be externally provided.

Reuse approaches 2

Application product lines	An application type is generalised around a common architecture so that it can be adapted in different ways for different customers.
COTS integration	Systems are developed by integrating existing application systems.
Configurable vertical applications	A generic system is designed so that it can be configured to the needs of specific system customers.
Program libraries	Class and function libraries implementing commonly-used abstractions are available for reuse.
Program generators	A generator system embeds knowledge of a particular types of application and can generate systems or system fragments in that domain.
Aspect-oriented software development	Shared components are woven into an application at different places when the program is compiled.

Reuse planning factors

- The development schedule for the software.
- The expected software lifetime.
- The background, skills and experience of the development team.
- The criticality of the software and its non-functional requirements.
- The application domain.
- The execution platform for the software.

Concept reuse

- Reusing ideas and principles rather than code

Concept reuse

- When you reuse program or design components, you have to follow the design decisions made by the original developer of the component.
- This may limit the opportunities for reuse.
- However, a more abstract form of reuse is concept reuse when a particular approach is described in an implementation independent way and an implementation is then developed.
- The two main approaches to concept reuse are:
 - Design patterns;
 - Generative programming.

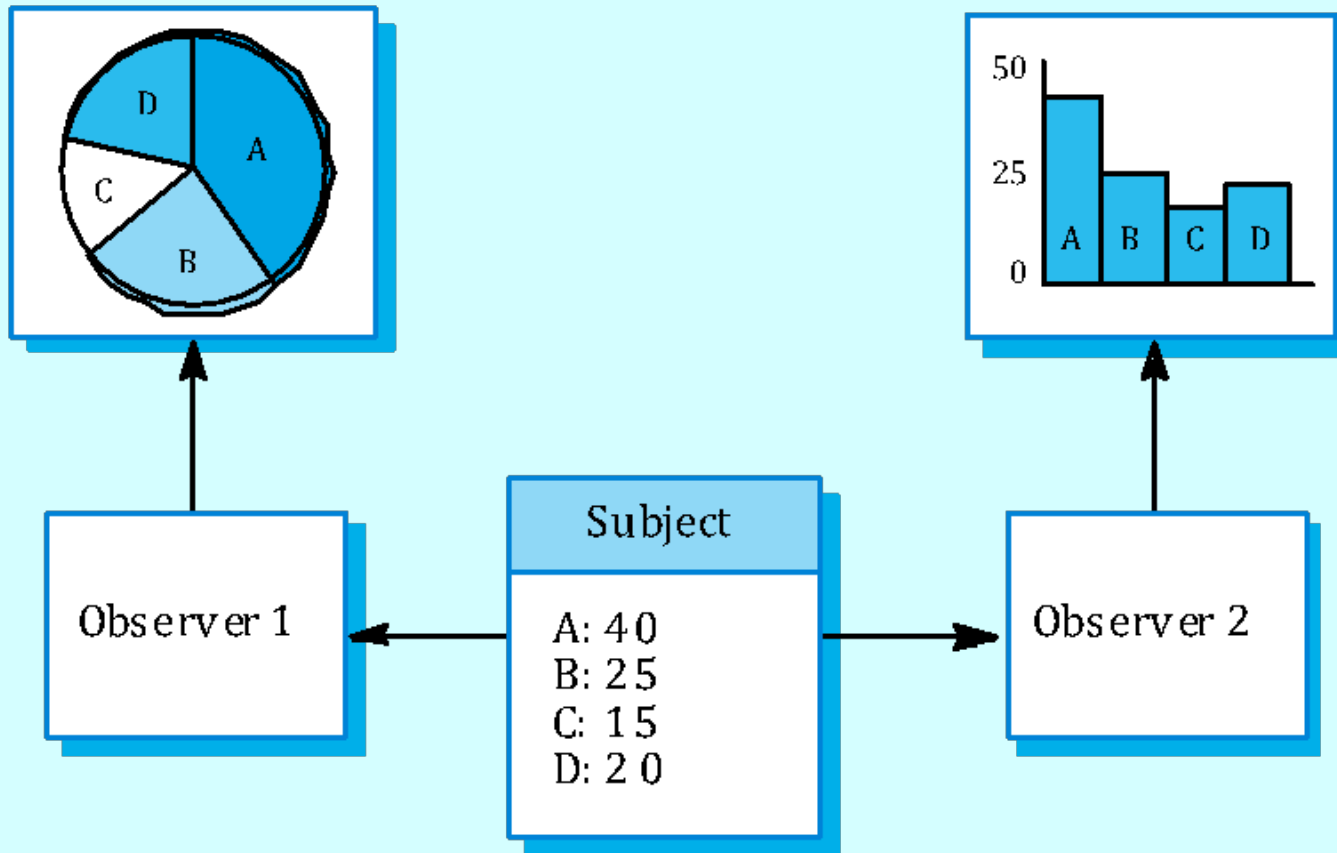
Design patterns

- A design pattern is a way of reusing abstract knowledge about a problem and its solution.
- A pattern is a description of the problem and the essence of its solution.
- It should be sufficiently abstract to be reused in different settings.
- Patterns often rely on object characteristics such as inheritance and polymorphism.

Pattern elements

- Name
 - A meaningful pattern identifier.
- Problem description.
- Solution description.
 - Not a concrete design but a template for a design solution that can be instantiated in different ways.
- Consequences
 - The results and trade-offs of applying the pattern.

Multiple displays



The Observer pattern

- Name
 - Observer.
- Description
 - Separates the display of object state from the object itself.
- Problem description
 - Used when multiple displays of state are needed.
- Solution description
 - See slide with UML description.
- Consequences
 - Optimisations to enhance display performance are impractical.

Application frameworks

- Adapting and specialising generic frameworks

Application frameworks

- Frameworks are a sub-system design made up of a collection of abstract and concrete classes and the interfaces between them.
- The sub-system is implemented by adding components to fill in parts of the design and by instantiating the abstract classes in the framework.
- Frameworks are moderately large entities that can be reused.

Framework classes

- System infrastructure frameworks
 - Support the development of system infrastructures such as communications, user interfaces and compilers.
- Middleware integration frameworks
 - Standards and classes that support component communication and information exchange.
- Enterprise application frameworks
 - Support the development of specific types of application such as telecommunications or financial systems.

Extending frameworks

- Frameworks are generic and are extended to create a more specific application or sub-system.
- Extending the framework involves
 - Adding concrete classes that inherit operations from abstract classes in the framework;
 - Adding methods that are called in response to events that are recognised by the framework.
- Problem with frameworks is their complexity which means that it takes a long time to use them effectively.

Model-view controller

- System infrastructure framework for GUI design.
- Allows for multiple presentations of an object and separate interactions with these presentations.
- MVC framework involves the instantiation of a number of patterns

Application system reuse

- Reusing existing applications by configuring them for specific customers

Application system reuse

- Involves the reuse of entire application systems either by configuring a system for an environment or by integrating two or more systems to create a new application.
- Two approaches covered here:
 - COTS product integration;
 - Product line development.

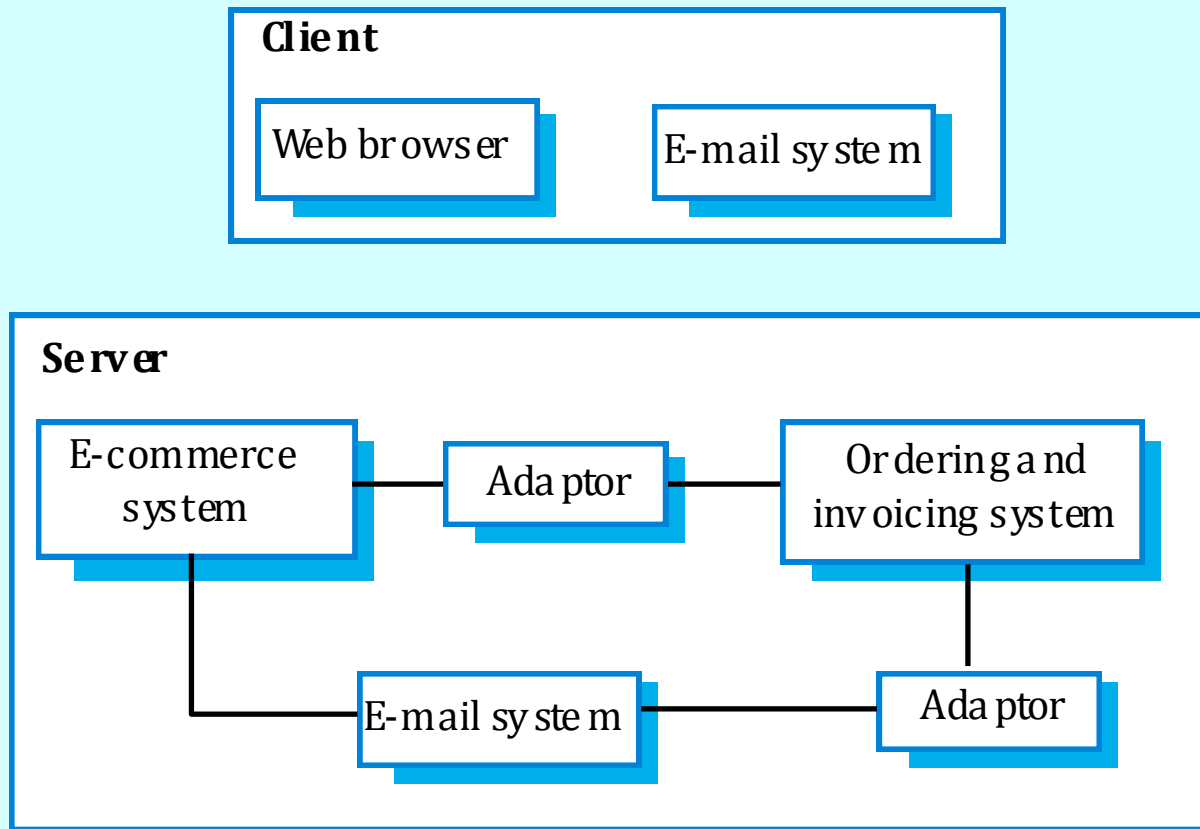
COTS product reuse

- COTS - Commercial Off-The-Shelf systems.
- COTS systems are usually complete application systems that offer an API (Application Programming Interface).
- Building large systems by integrating COTS systems is now a viable development strategy for some types of system such as E-commerce systems.
- The key benefit is faster application development and, usually, lower development costs.

COTS design choices

- Which COTS products offer the most appropriate functionality?
 - There may be several similar products that may be used.
- How will data be exchanged?
 - Individual products use their own data structures and formats.
- What features of the product will actually be used?
 - Most products have more functionality than is needed. You should try to deny access to unused functionality.

E-procurement system



COTS products reused

- On the client, standard e-mail and web browsing programs are used.
- On the server, an e-commerce platform has to be integrated with an existing ordering system.
 - This involves writing an adaptor so that they can exchange data.
 - An e-mail system is also integrated to generate e-mail for clients. This also requires an adaptor to receive data from the ordering and invoicing system.

COTS system integration problems

- Lack of control over functionality and performance
 - COTS systems may be less effective than they appear
- Problems with COTS system inter-operability
 - Different COTS systems may make different assumptions that means integration is difficult
- No control over system evolution
 - COTS vendors not system users control evolution
- Support from COTS vendors
 - COTS vendors may not offer support over the lifetime of the product

Software product lines

- Software product lines or application families are applications with generic functionality that can be adapted and configured for use in a specific context.
- Adaptation may involve:
 - Component and system configuration;
 - Adding new components to the system;
 - Selecting from a library of existing components;
 - Modifying components to meet new requirements.

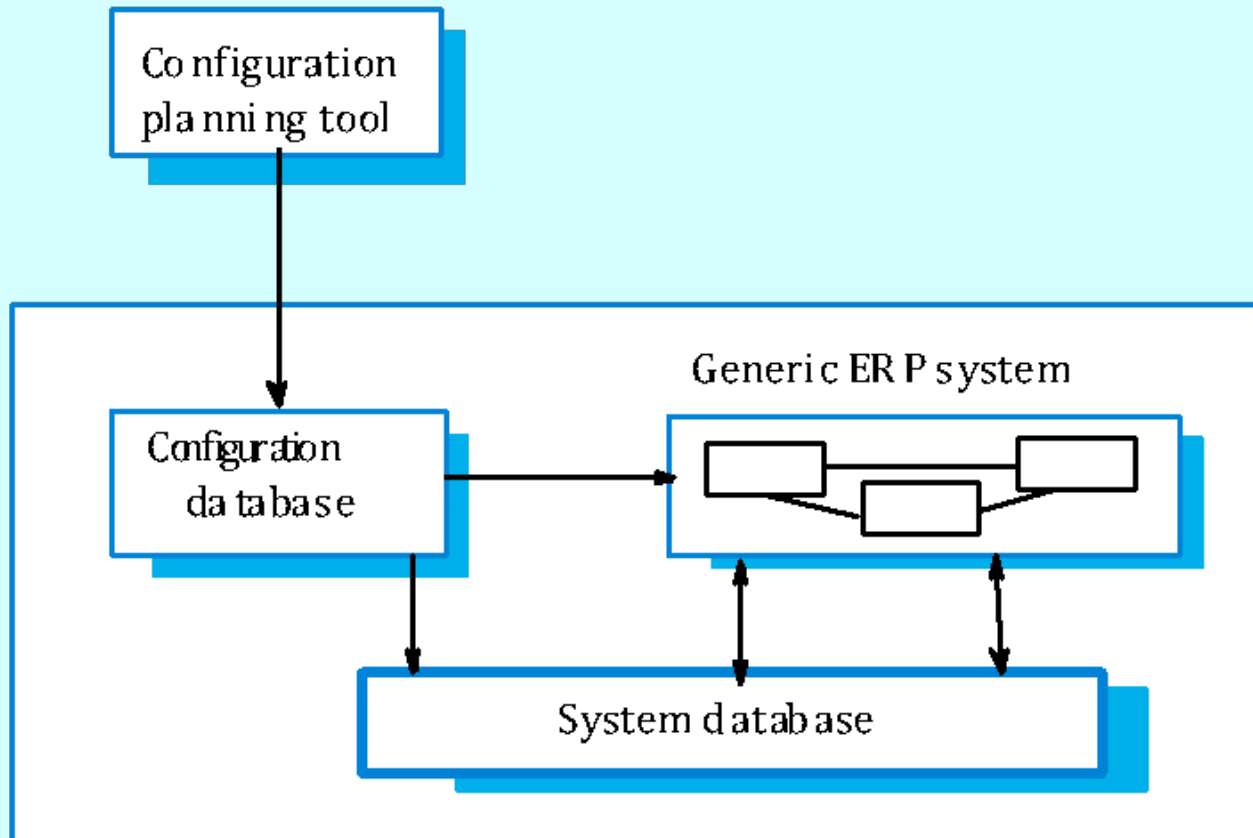
COTS product specialisation

- Platform specialisation
 - Different versions of the application are developed for different platforms.
- Environment specialisation
 - Different versions of the application are created to handle different operating environments e.g. different types of communication equipment.
- Functional specialisation
 - Different versions of the application are created for customers with different requirements.
- Process specialisation
 - Different versions of the application are created to support different business processes.

COTS configuration

- Deployment time configuration
 - A generic system is configured by embedding knowledge of the customer's requirements and business processes. The software itself is not changed.
- Design time configuration
 - A common generic code is adapted and changed according to the requirements of particular customers.

ERP system organisation



ERP systems

- An Enterprise Resource Planning (ERP) system is a generic system that supports common business processes such as ordering and invoicing, manufacturing, etc.
- These are very widely used in large companies - they represent probably the most common form of software reuse.
- The generic core is adapted by including modules and by incorporating knowledge of business processes and rules.

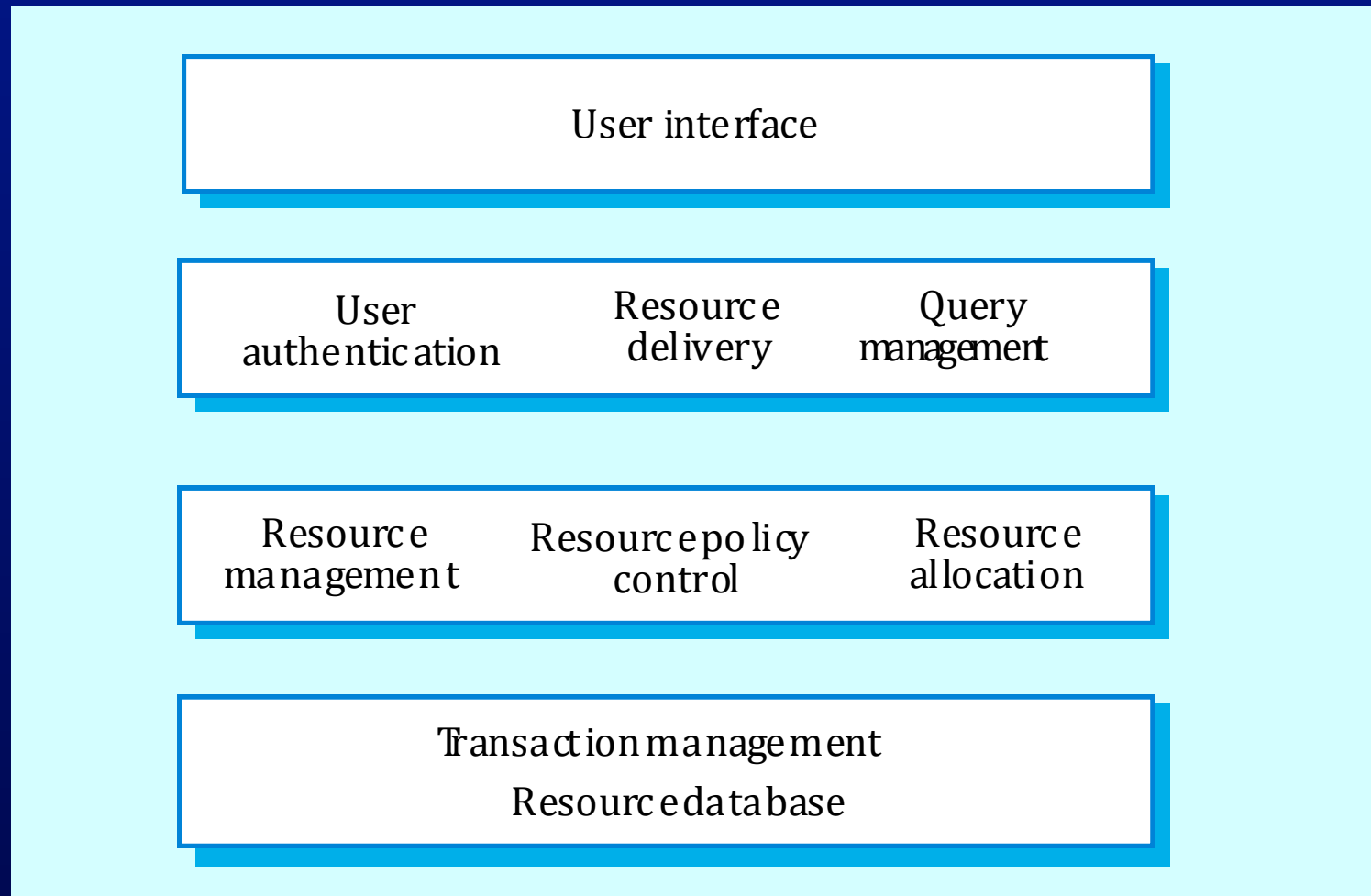
Design time configuration

- Software product lines that are configured at design time are instantiations of generic application architectures.
- Generic products usually emerge after experience with specific products.

Product line architectures

- Architectures must be structured in such a way to separate different sub-systems and to allow them to be modified.
- The architecture should also separate entities and their descriptions and the higher levels in the system access entities through descriptions rather than directly.

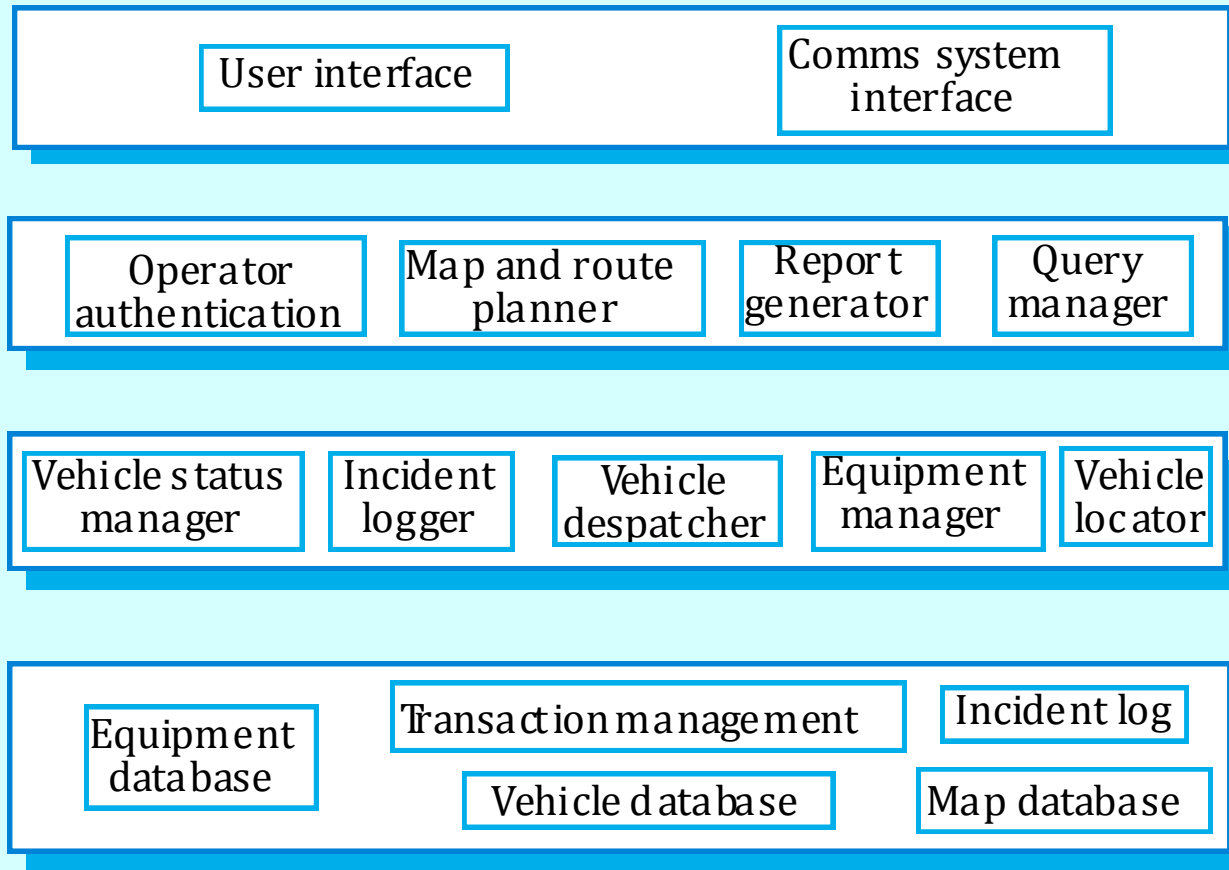
A resource management system



Vehicle despatching

- A specialised resource management system where the aim is to allocate resources (vehicles) to handle incidents.
- Adaptations include:
 - At the UI level, there are components for operator display and communications;
 - At the I/O management level, there are components that handle authentication, reporting and route planning;
 - At the resource management level, there are components for vehicle location and despatch, managing vehicle status and incident logging;
 - The database includes equipment, vehicle and map databases.

A despatching system



Product instance development

- Elicit stakeholder requirements
 - Use existing family member as a prototype
- Choose closest-fit family member
 - Find the family member that best meets the requirements
- Re-negotiate requirements
 - Adapt requirements as necessary to capabilities of the software
- Adapt existing system
 - Develop new modules and make changes for family member
- Deliver new family member
 - Document key features for further member development

Key points

- Advantages of reuse are lower costs, faster software development and lower risks.
- Design patterns are high-level abstractions that document successful design solutions.
- Program generators are also concerned with software reuse - the reusable concepts are embedded in a generator system.
- Application frameworks are collections of concrete and abstract objects that are designed for reuse through specialisation.

Key points

- COTS product reuse is concerned with the reuse of large, off-the-shelf systems.
- Problems with COTS reuse include lack of control over functionality, performance, and evolution and problems with inter-operation.
- ERP systems are created by configuring a generic system with information about a customer's business.
- Software product lines are related applications developed around a common core of shared functionality.